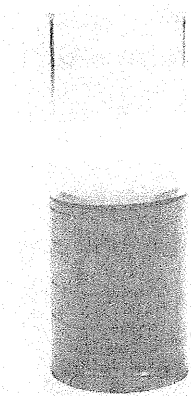


# POTASSIUM MONOPERSULFATE

MEDINA COUNTY HEALTH DEPARTMENT

## Just What is Potassium Monopersulfate?



False high Combined Chlorine reading with a DPD test kit.

### What is Potassium Monopersulfate?

Potassium Monopersulfate (MPS) Compound is a non-chlorine "shock" product. It was originally developed for residential swimming pool use;

however, in the last few months we have noticed that it is becoming more prevalent in the public sector. This product is used to eliminate organic contamination. **It will NOT remove combined chlorines (CC).** Therefore, it is not equivalent to "Superchlorination" or "Breakpoint Chlorination." Pools in which this product is used will still require a chlorine-based product to reduce elevated CC levels. MPS is mainly used to oxidize organic matter which increases sanitizer efficiency by "freeing up" more product to be used for disinfection. MPS itself **DOES NOT** kill pathogens; it is not a disinfectant.

### How do I know if I use this product?

Potassium Monopersulfate will be listed as a main

ingredient on the product label. Common names for this product are *Oxy-Bright*, *Oxone*, and *True-Ox*.

### What is the common dosage?

The common dosage of this product is 2 pounds per 10,000 gallons for initial treatment and 1 pound per 10,000 gallons for weekly follow-up treatments. However, **YOU SHOULD ALWAYS READ YOUR SPECIFIC PRODUCT LABEL!**

### What are the advantages?

Advantages of this product are that it promotes sanitizer efficiency, does not produce chloramines, restores sparkle, will not harm pool surfaces, and requires a short lag time until the pool can be re-opened.

### How MPS Affects Water Chemistry

- **Increases TDS**
- **Increases ORP**
- **Decreases pH**
- **Decreases Alkalinity**
- **No reduction in Combined Chlorine**

## Why the Concern with Using this Product?

MPS will produce a **FALSE** high combined chlorine (CC) reading when water is tested using a DPD or FAS-DPD type test kit. When conducting the test for CC, a dark pink/red color will appear, which is typically indicative of high combined chlorine, because the monopersulfate

compound interacts with DPD Reagent #3.

### How do I fix this interference?

Pool operators using this product can "shock" at night, after the pool has closed, and wait 8 hours before testing pool water. This will give the MPS enough time to dissipate.

However, if a pool is shocked with MPS before or during pool hours, a de-ox reagent that neutralizes the MPS interference **MUST** be purchased for your test kit. This reagent can also help pool operators who use this product to determine the total amount of MPS compound present in pool water. Remember, "shocking" with MPS will **NOT** reduce CC.



# 10 Things Pool Operators Should Know About...

## POTASSIUM MONOPERSULFATE

1. Potassium Monopersulfate (MPS) Compound is a NON-CHLORINE shock product used to oxidize and eliminate organic contamination in order to “free-up” sanitizer so that it can be used for disinfection.
2. MPS was originally developed for residential use, but in the last year has become more common in the public pool/spa sector.
3. Common brand names are “Oxy-Bright,” “Oxone,” and “True-Ox.”
4. MPS is a non-chlorine product. It will NOT eliminate chloramines (combined chlorine). “Superchlorination” or “Breakpoint Chlorination” is still needed to decrease combined chlorine, even if MPS is being used to “shock.” MPS only reduces the organic load.
5. Use of MPS in a pool will interfere with the combined chlorine test, producing a FALSE high combined chlorine reading in DPD and FAS-DPD kits (a dark pink or red color will appear).
6. Often times, more MPS will be added because pool operators mistakenly believe combined chlorine is high, causing MPS levels to build up in the pool, but not reducing CC.
7. In order to obtain an accurate combined chlorine reading, operators who use MPS in their pool/spa can shock in the evening (after pool closes), and wait at least 8 hours before testing.
8. If pool is shocked before/during hours of operation, pool operators MUST purchase “de-ox” reagents for their test kits that eliminate the MPS interference. These reagents can also help determine the level of monopersulfate compound present in the pool.
9. Advantages of MPS are that it promotes maximum sanitizer efficiency, will not produce chloramines, restores sparkle, and is gentle on pool surfaces.
10. MPS will increase total dissolved solids, increase ORP, decrease pH, and decrease Total Alkalinity.



4800 Ledgewood Drive, Medina OH 44256

1-888-723-9698

[www.medinahealth.org](http://www.medinahealth.org)